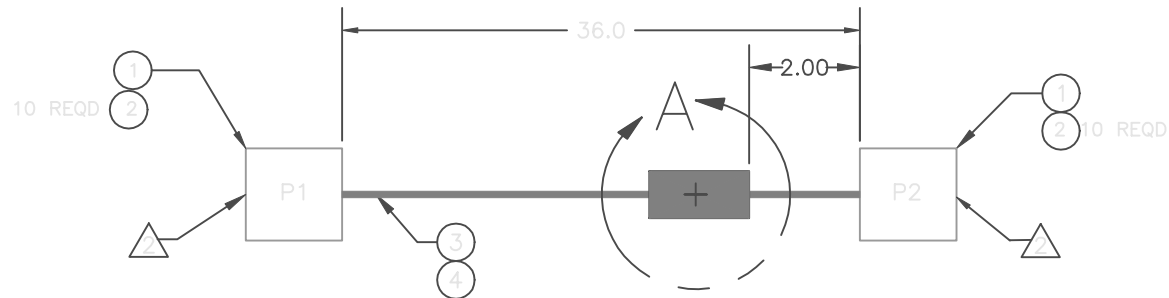





REV	REVISIONS	DATE	APPROVED
A	RELEASE	10/6/99	
B	SEE ECO # 4419	11/5/99	



6	A/R	18-162	FIT-221-3/4-BLK	ALPHA	3/4 BLACK SHRINK TUBE
5	1	47-18	28B0686-200	STEWART	FERRITE EMI SUPPRESSION
4	A/R	18-160A	FIT-221-3/8-BLK	ALPHA	3/8 BLACK SHRINK TUBE
3	37	19-123	8457	BELDEN	BELDEN 8457, 12 STRANDED CONDUCTOR
2	20	15-8	08-56-0110	MOLEX	TERMINAL, CRIMP, FEMALE
1	2	15-524	22-01-2107	MOLEX	HOUSING WAFER, 10 PIN FEMALE
ITEM	QTY	PRIME PART NO.	MANUFACTURER P/N	MANUFACTURER	DESCRIPTION

#### PARTS LIST

 PR&E ASSEMBLY SPECIFICATION 74-51  
 1.  INDICATES ITEMS LISTED ON THIS PAGE  
 NOTES: UNLESS OTHERWISE SPECIFIED

UNLESS OTHERWISE SPECIFIED DIMENSIONS ARE IN INCHES TOLERANCES ARE:  DECIMALS: .X=+/- 1/8" .XXX=  ANGLES: +/-	PACIFIC RESEARCH & ENGINEERING COMPANY CONFIDENTIAL		 PACIFIC RESEARCH & ENGINEERING 2070 LAS PALMAS DRIVE CARLSBAD, CALIFORNIA 92009 USA 760.438.3911 FAX 760.438.9277 WWW.PRE.COM		
			CABLE, BARGRAPH METER IMPULSE		
	APPROVALS	DATE			
	L. STANTON	6/16/99	B	90-1163	B
	JIM STEVENSON	6/16/99			
L. STANTON	10/6/99	SCALE= NONE		SHEET 1 OF 2	

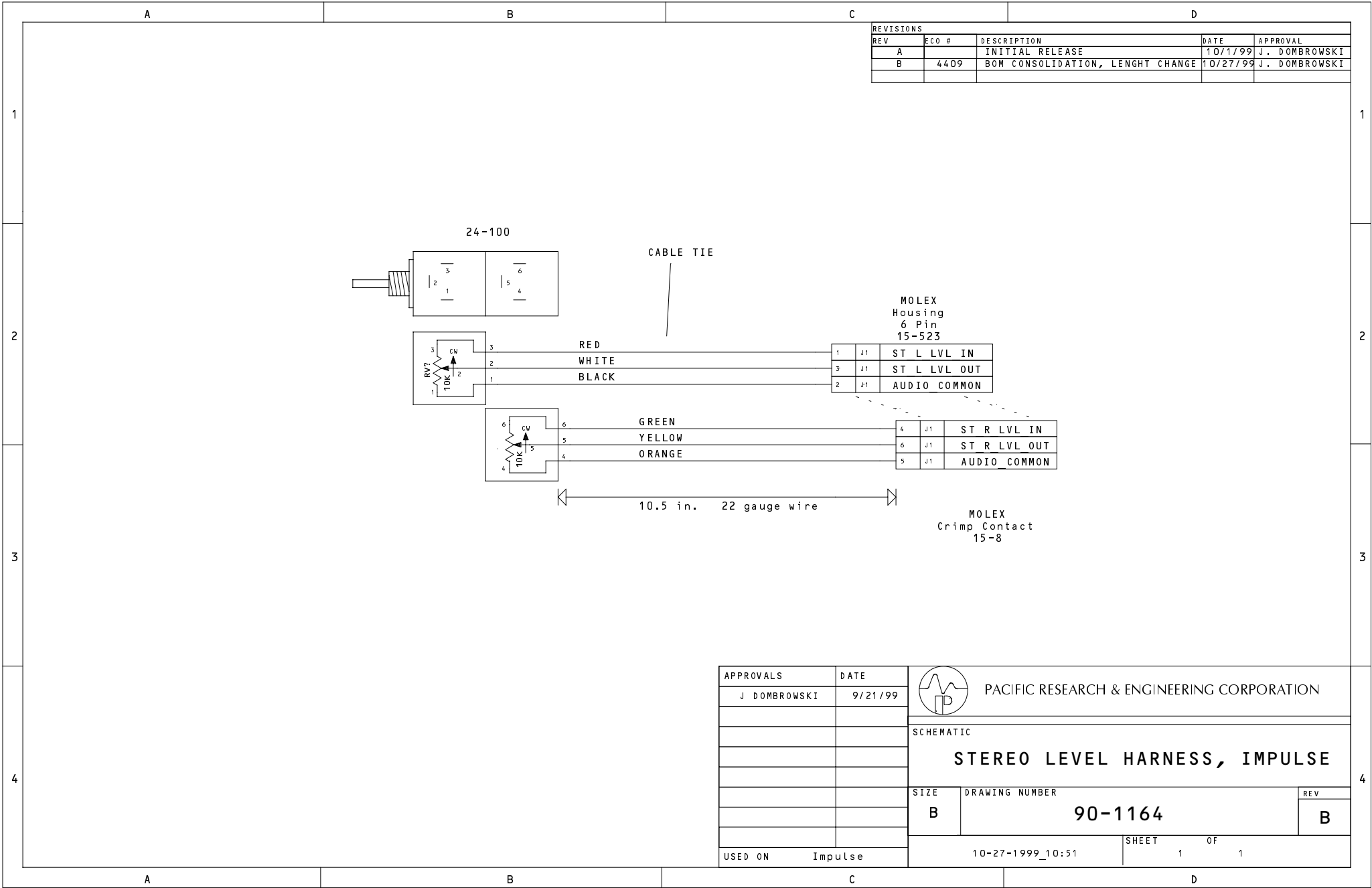
BARGRAPH METER PCB

P1	SIGNAL	PIN
	+ 5V LOGIC	1
	+ 5V LOGIC	2
	LOGIC GND	3
	LOGIC GND	4
	LOGIC GND	5
	DISP. SER. DATA 1	6
	DISP. SER. DATA 2	7
	DISP. VU/~PPM	8
	~ PGM 2/PGM 3	9
	~ SYSTEM RESET	10


MAIN PROCESSOR PCB

P2	PIN	SIGNAL
	1	+ 5V LOGIC
	2	+ 5V LOGIC
	3	LOGIC GND
	4	LOGIC GND
	5	LOGIC GND
	6	DISP. SER. DATA 1
	7	DISP. SER. DATA 2
	8	DISP. VU/~PPM
	9	~PGM 2/PGM 3
	10	~ SYSTEM RESET

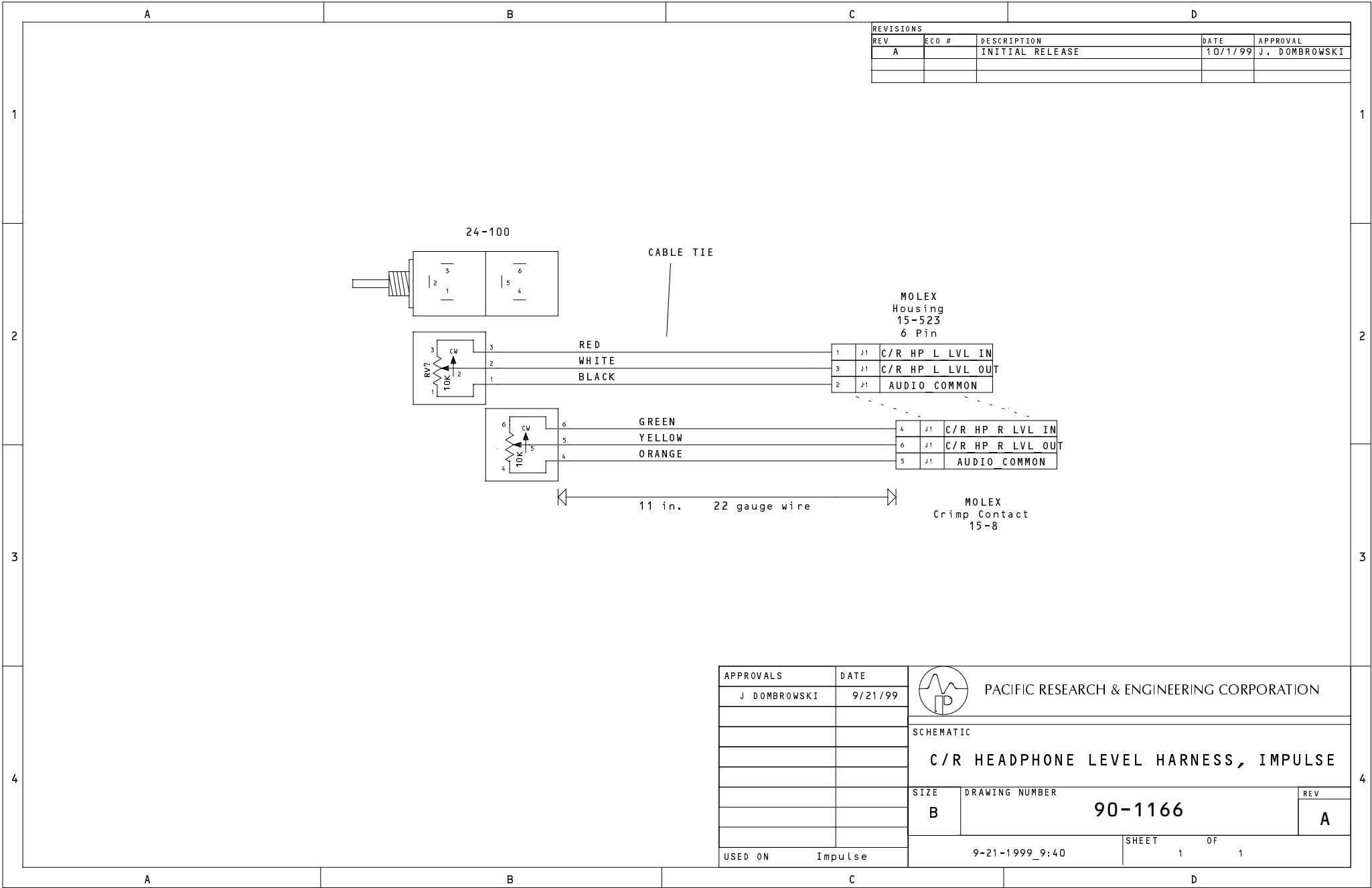
WIRE LIST		
FROM	TO	COLOR
P1 - 1	P2 - 1	BLK
P1 - 2	P2 - 2	WHITE
P1 - 3	P2 - 3	RED
P1 - 4	P2 - 4	GREEN
P1 - 5	P2 - 5	BROWN
P1 - 6	P2 - 6	BLUE
P1 - 7	P2 - 7	ORANGE
P1 - 8	P2 - 8	YELLOW
P1 - 9	P2 - 9	PURPLE
P1 - 10	P2 - 10	GRAY
NOT USED	NOT USED	PINK
NOT USED	NOT USED	TAN



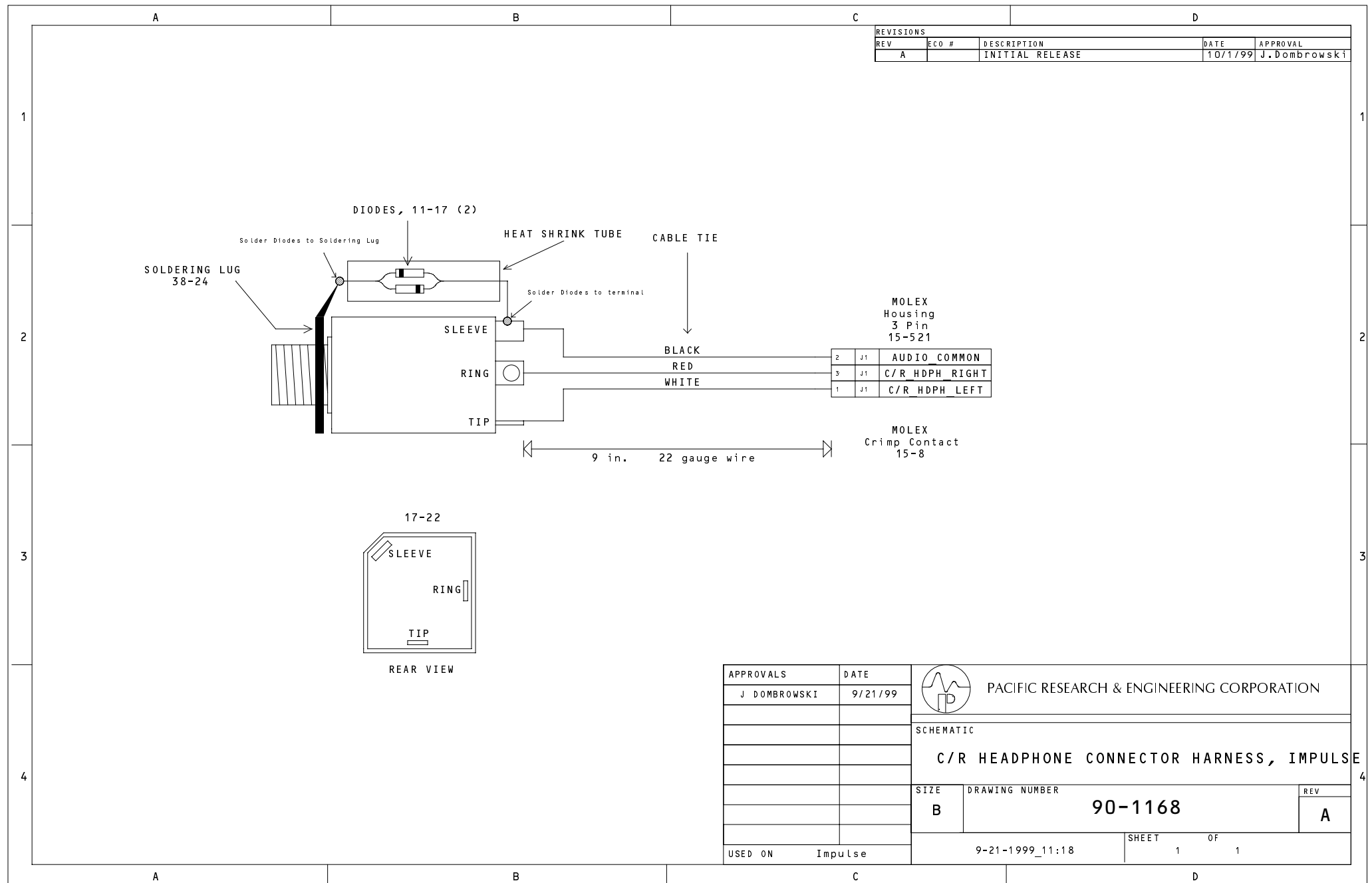
REVISIONS				
REV	ECO #	DESCRIPTION	DATE	APPROVAL
A		INITIAL RELEASE	10/1/99	J. DOMBROWSKI
B	4409	BOM CONSOLIDATION, LENGHT CHANGE	10/27/99	J. DOMBROWSKI

APPROVALS		DATE		<div>PACIFIC RESEARCH &amp; ENGINEERING CORPORATION</div>	
J DOMBROWSKI		9/21/99			
		SCHEMATIC  <b>STEREO LEVEL HARNESS, IMPULSE</b>			
		SIZE	DRAWING NUMBER		REV
		B	90-1164		B
USED ON		Impulse		10-27-1999_10:51	
				SHEET 1 OF 1	



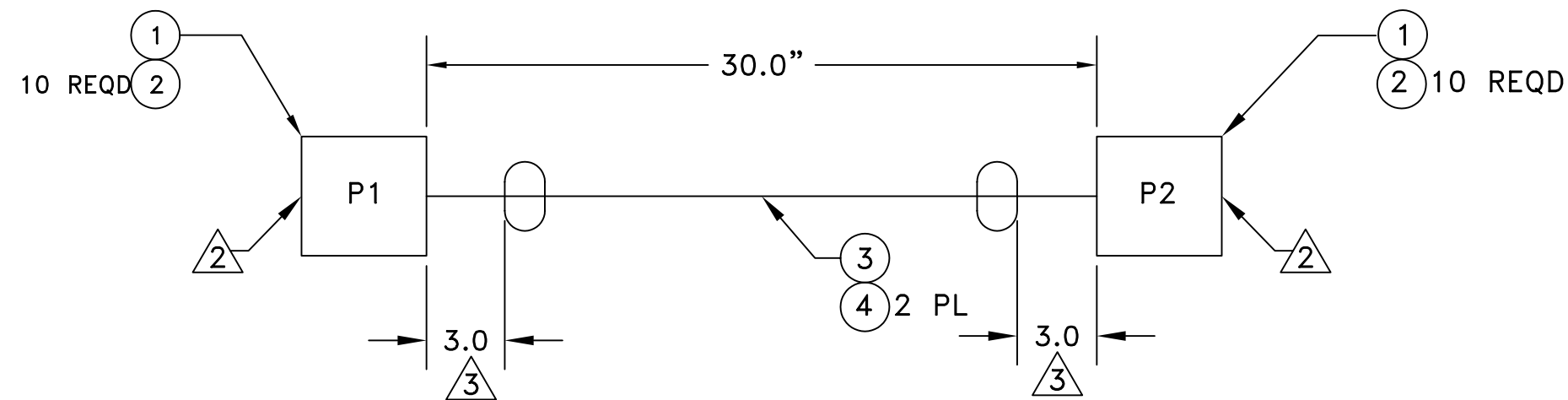









REV	REVISIONS	DATE	APPROVED
A	RELEASE	10/6/99	
B	SEE ECO 4578	11/13/00	



4	A/R	18-160A	FIT-221-3/8-BLK	ALPHA	3/8 BLACK SHRINK TUBE
3	31	19-305	8466	BELDEN	12 COND, 18 AWG, BELDEN 8466
2	20	15-1-1	08-50-0106	MOLEX	TERMINAL, CRIMP, PIN
1	2	15-515	22-01-2107	MOLEX	HOUSING, WAFER, 10 PIN, FEMALE
ITEM	QTY	PR&E PART NO.	MANUFACTURER P/N	MANUFACTURER	DESCRIPTION

PARTS LIST

3 STRIP OUTER INSULATION TO DIMENSION SHOWN.  
2 PR&E ASSEMBLY SPECIFICATION 74-52  
1. ○ INDICATES ITEMS LISTED ON THIS PAGE  
NOTES: UNLESS OTHERWISE SPECIFIED

UNLESS OTHERWISE SPECIFIED DIMENSIONS ARE IN INCHES TOLERANCES ARE:  DECIMALS: .X=1/8"  ANGLES: +/-		PACIFIC RESEARCH & ENGINEERING COMPANY CONFIDENTIAL		 PACIFIC RESEARCH & ENGINEERING 2070 LAS PALMAS DRIVE CARLSBAD, CALIFORNIA 92009 USA 760.438.3911 FAX 760.438.9277 WWW.PRE.COM	
		APPROVALS	DATE	TITLE CABLE ASSY, DC POWER IMPULSE	
		DESIGN: L. STANTON	6/18/99	SIZE B	DWG. NO. 90-1169
		DRAWN: JIM STEVENSON	6/18/99	REV. B	
LAST REV BY: JIM STEVENSON		11/13/00	NONE		1 OF 2

POWER SUPPLY

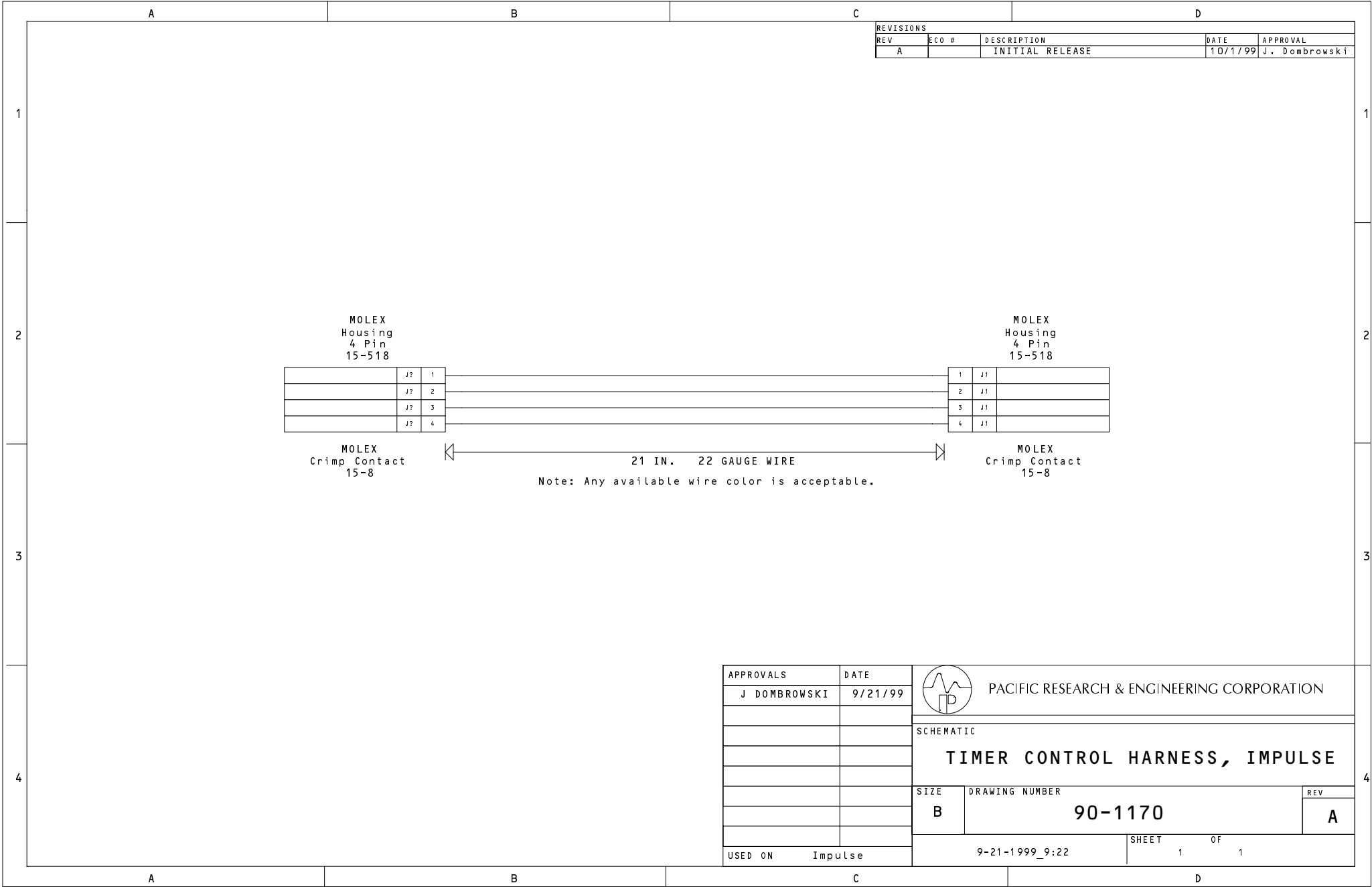
P1	SIGNAL	PIN
	V-15	10
	V-15 COM	9
	V+15 COM	8
	V+15	7
	V+48 COM	6
	V+48	5
	V+5 COM	4
	V+5 COM	3
	V+5	2
	V+5	1

MAIN PROCESSOR BOARD

P2	PIN	SIGNAL
	1	V-15
	2	V-15 COM
	3	V+15 COM
	4	V+15
	5	V+48 COM
	6	V+48
	7	V+5 COM
	8	V+5 COM
	9	V+5
	10	V+5

WIRE LIST

FROM	TO	COLOR
P1 - 10	P2 - 1	BLK
P1 - 9	P2 - 2	WHITE
P1 - 8	P2 - 3	RED
P1 - 7	P2 - 4	GREEN
P1 - 6	P2 - 5	ORANGE
P1 - 5	P2 - 6	BLUE
P1 - 4	P2 - 7	WHITE/BLACK
P1 - 3	P2 - 8	RED/BLACK
P1 - 2	P2 - 9	GREEN/BLACK
P1 - 1	P2 - 10	ORANGE/BLACK
NOT USED	NOT USED	BLUE/BLACK
NOT USED	NOT USED	BLACK/WHITE



A	B	C	D																																	
		<table><tr><td colspan="5">REVISIONS</td></tr><tr><td>REV</td><td>ECO #</td><td>DESCRIPTION</td><td>DATE</td><td>APPROVAL</td></tr><tr><td></td><td></td><td></td><td></td><td></td></tr></table>		REVISIONS					REV	ECO #	DESCRIPTION	DATE	APPROVAL																							
REVISIONS																																				
REV	ECO #	DESCRIPTION	DATE	APPROVAL																																
1				1																																
2	<div><div><div><div></div><div></div></div><div>MICROPHONE ASSEMBLY # 23-1</div><div>COAX CABLE, 75 OHM, 30AWG ( #19-329 )</div></div><div><div>HEAT SHRINK</div><div>WHITE</div><div>SHIELD</div><div>(clear heat shrink on shield wire)</div></div><div><table><tr><td>1</td><td>J1</td><td></td></tr><tr><td>2</td><td>J1</td><td>TB MIC IN</td></tr><tr><td>3</td><td>J1</td><td>AUDIO COMMON</td></tr></table><div><div>MOLEX Housing</div><div>3 Pin</div><div>15-521</div><div>MOLEX Crimp Contact</div><div>15-8</div></div></div></div>			1	J1		2	J1	TB MIC IN	3	J1	AUDIO COMMON	2																							
1	J1																																			
2	J1	TB MIC IN																																		
3	J1	AUDIO COMMON																																		
3	<div>16 inches total</div> <div>add 7 inches to 23-1 assembly</div>			3																																
4	<table><tr><td>APPROVALS</td><td>DATE</td><td colspan="2"><div><div><div>HARRIS</div><div>CORPORATION BROADCAST SYSTEMS DIVISION</div><div>DESIGN PACIFIC RESEARCH &amp; ENGINEERING</div></div></div></td></tr><tr><td>J DOMBROWSKI</td><td>6/4/99</td><td colspan="2">SCHEMATIC</td></tr><tr><td></td><td></td><td colspan="2">TALKBACK MIC HARNESS, IMPULSE</td></tr><tr><td></td><td></td><td>SIZE</td><td>DRAWING NUMBER</td></tr><tr><td></td><td></td><td>B</td><td>90-1171</td></tr><tr><td></td><td></td><td></td><td>REV</td></tr><tr><td></td><td></td><td></td><td>A</td></tr><tr><td colspan="2">USED ON</td><td>Impulse</td><td>SHEET 1 OF 1</td></tr></table>			APPROVALS	DATE	<div><div><div>HARRIS</div><div>CORPORATION BROADCAST SYSTEMS DIVISION</div><div>DESIGN PACIFIC RESEARCH &amp; ENGINEERING</div></div></div>		J DOMBROWSKI	6/4/99	SCHEMATIC				TALKBACK MIC HARNESS, IMPULSE				SIZE	DRAWING NUMBER			B	90-1171				REV				A	USED ON		Impulse	SHEET 1 OF 1	4
APPROVALS	DATE	<div><div><div>HARRIS</div><div>CORPORATION BROADCAST SYSTEMS DIVISION</div><div>DESIGN PACIFIC RESEARCH &amp; ENGINEERING</div></div></div>																																		
J DOMBROWSKI	6/4/99	SCHEMATIC																																		
		TALKBACK MIC HARNESS, IMPULSE																																		
		SIZE	DRAWING NUMBER																																	
		B	90-1171																																	
			REV																																	
			A																																	
USED ON		Impulse	SHEET 1 OF 1																																	
A	B	C	D																																	